



Charity & Fundraising Suppliers

www.direct-fundraising.co.uk

www.ecoplastics.co.uk

Tel: 0161 766 6444

@directfundraise

@ecoplastics

/directfundraise

/ecoplastics

Twist 'n' Click Wrap Label Template

Cut Line



Edge of Bleed



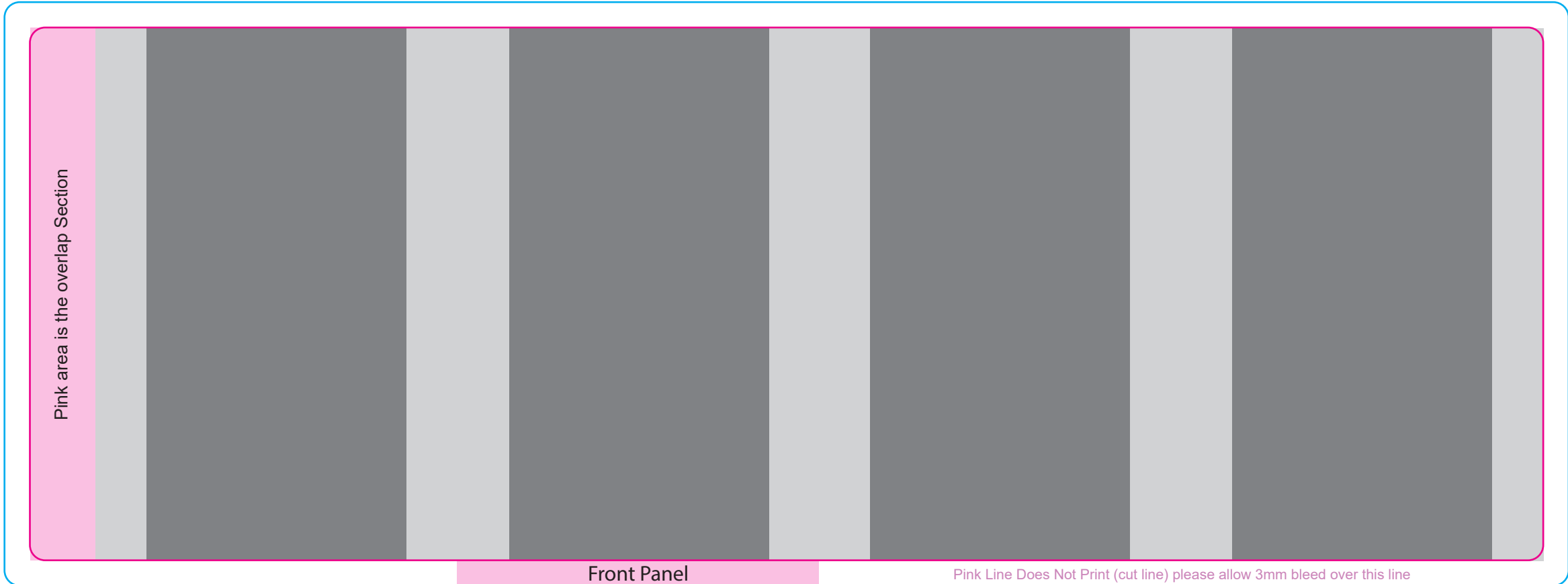
Dark Grey area is the face of the box

Light Grey area is where the curve starts. This area can still be printed

Label is 298mm including the overlap x 105mm

Please allow a 3mm bleed over the pink cutter line

298mm wide



105mm High

Label Requirements

Thank you for ordering labels from us

Above is the template for the labels that you are ordering. All sizes are indicated next to the template. Templates are available in EPS, AI and PDF formats. Labels should be designed using professional design software such as Adobe Illustrator, Corel Draw etc.

Sending completed artwork

When designing your labels, please make sure that you allow at least a 3mm bleed over the pink cutter line for background images, and 3mm under the cutter line for important information on the templates, this will ensure that if there is any movement when printing that no important information will not be missed off. With text, fonts need to be outlined (depending on the design program used) or the font files need to be sent to us (if they are not standard fonts), as we can't guarantee that we will have them on file and sometimes are exclusive to your brand.

In order to design the labels, please read the following information.

Logos

Original EPS or PDF format is preferred as this gives the best printing quality. These files can usually be obtained from the designer of the logo. You can use other formats such as Jpegs, but images taken from websites can be very small and do not print well. (If it looks tiny on the screen or pixilated it will not print).

Please note that only vector outlined artwork such as original EPS/PDF files from the designer can be used to colour match as all other files are non-editable. Although every effort is made to print pantone colours, due to limitations of digital printing in CMYK, we cannot guarantee an exact colour match. If accurate colour match is important to your branding, we advise requesting a physical printed proof which will show the final print colours.

Images

These need to be high resolution Jpegs in order to get a good print quality. (If it looks blurred or pixilated it will not print).

Text

It is best to keep text to a minimum as people don't read big paragraphs. Keep it simple for the most impact.

Large files can be sent to us for free via www.wetransfer.com

PLEASE NOTE

The Twist 'n' Click Collection Box labels need to take into account the 4 sides of the box. Artwork that would usually work on a round box of a similar design will not work on this one. We have the special template that divides the label up into sections to take this into account. Sample designs can be supplied on request.